

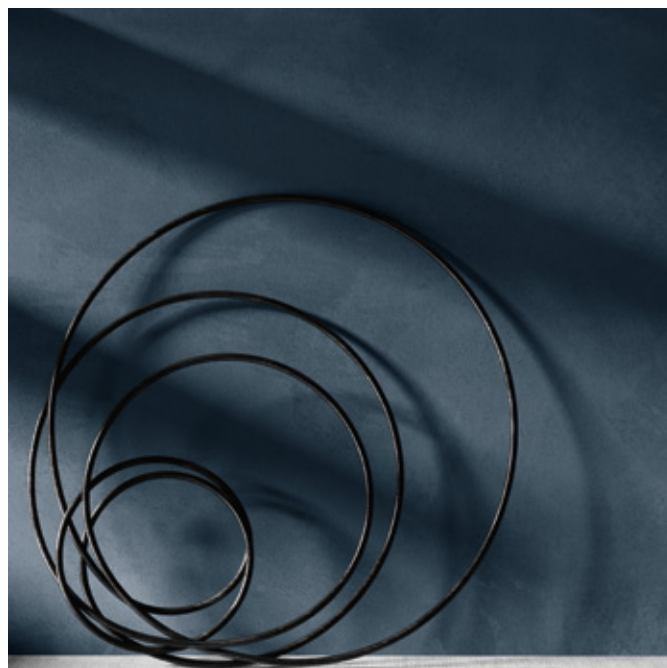
SET



ceramica
SANT'AGOSTINO

m
8
9
35
36
45
46
17
18
19
9

SET



I linguaggi contemporanei, non solo del progetto ma della stessa vita quotidiana, sono sempre più fluidi, nei valori estetici, sociali, economici. E nulla è più eclettico della materia ceramica evoluta, che sembra giocare liberamente - in un'alchimia di sintesi fra derivazioni, incroci e composizioni - con le altre materie: studiandole, interpretandole e plasmandole per renderle più adatte ad ogni esigenza del costruire e dell'abitare contemporanei.

SET è una vera e propria fusione di materiali diversi - cemento: SET CONCRETE; cemento-tessuto: SET DRESS e SET TARTAN; cemento con marmo: SET GEM; vernice: SET WALL; legno: METROWOOD; decorazione: METROSIGNS - che si incrociano fino ad unirsi l'uno con l'altro per dare vita a piccoli capolavori ceramici.

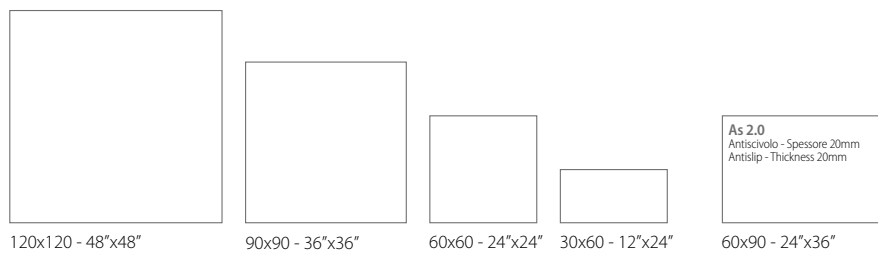
The contemporary languages, not only of the project but the same everyday life, are increasingly fluid, in the aesthetic values, social, economic. Nothing is more eclectic than the evolved ceramic matter, which seems to play free - in an alchemy of synthesis between derivations, intersections and compositions - with other materials: by studying, interpreting and shaping to make them more suitable for all the requirements of contemporary building and living.

SET is a true fusion of different materials - cement: SET CONCRETE; cement-fabric: SET DRESS and SET TARTAN; cement with marble: SET GEM; paint: SET WALL; wood: METROWOOD; decoration: METROSIGNS - that intersect to join up one to the other and give life to small ceramic masterpieces.

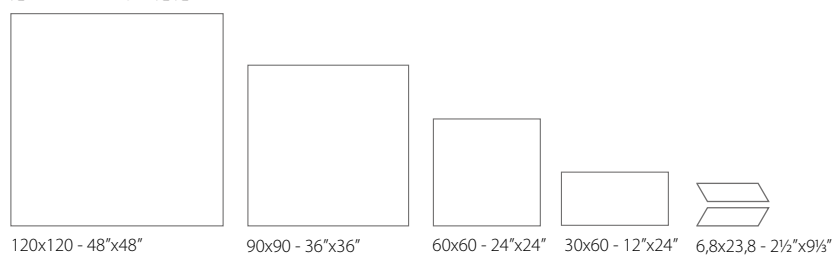


FORMATI • SIZES

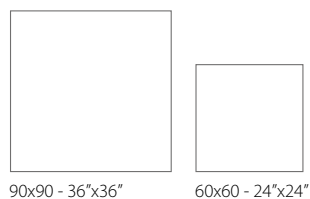
SET CONCRETE



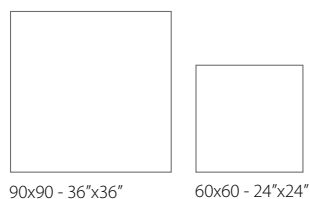
SET DRESS



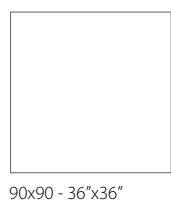
SET GEM



SET TARTAN



METROWOOD



SET TARTAN



Gres Porcellanato Rettificata

Porcelain Rectified
Feinsteinzeug Kalibriert
Grès cérame Rectifié
Керамогранит Ректифицированная

SET GEM

SET DRESS



METROWOOD

METROSIGNS

SET CONCRETE



Set Concrete Dark 120120



LAVORAZIONE MANUALE DI CASSERI DI CEMENTO

6

Manual processing of
concrete structures

Manuelle Verarbeitung
von Zementverschaltungen

Travail artisanal du béton
brut de coffrage

Ручная обработка
цементных опалубок





Set Dress Dark 120120



ARMATURA DI UN TAPPETO A RIGHE DI COTONE IMMERSO NEL CEMENTO

10

The weft of entwined stripes of a
cotton carpet set in concrete

Bindung eines teppichs mit
Baumwollstreifen in zement getauchtn

Armure d'un tapis a' rayures de coton
immerge' dans le béton

Армирование х/б подложкой в
полоску, погружённой в цемент







Set Concrete Grey 9090

Wall / Set Dress Grey 9090

L'ARTE DI COMPORRE IL SOFISTICATO EQUILIBRIO DELLE MATERIE NELLO SPAZIO CONTEMPORANEO

14

The art of creating a sophisticated
balance of materials in contemporary
space

Die Kunst, ein ausgeklügeltes
gleichgewicht zwischen den
Rohstoffen herzustellen in
zeitgenössischer Umgebung

L'art de composer un sophistiqué
équilibre des matières dans l'espace
contemporain

Искусство создавать
изысканную гармонию материалов
в современном пространстве

Set Concrete Pearl 9090

Wall / Set Gem Pearl 9090, Set Concrete Pearl 9090





> Set Gem Pearl 9090

Wall / Metrowood Natural 9090,
Bianco Lasa 60120 Kry (THEMAR Collection)







< Set Gem Pearl 9090

Wall / Set Concrete Pearl 9090,
Bianco Lasa 60120 Kry (THEMAR Collection)



Set Concrete Grey 120120

Wall / Set Concrete Grey 120120, Metrowood Natural 9090





Metrowood Natural 9090

> Set Concrete Grey 120120





Set Tartan Grey 9090

Wall / Set Tartan Grey 9090, Set Concrete Grey 9090





Set Tartan Grey 9090





Set Tartan White 9090

> Set Tartan White 9090





Set Concrete Pearl 9090

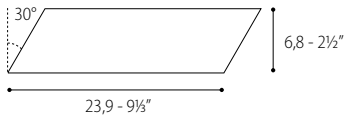
> Set Concrete Pearl 9090
Wall / Set Wall White 1590



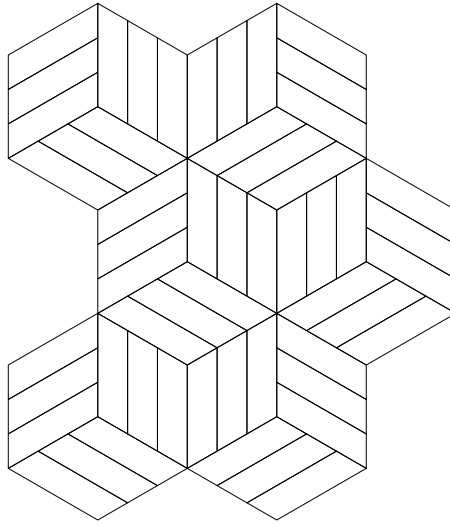


Set Concrete Dark 6060

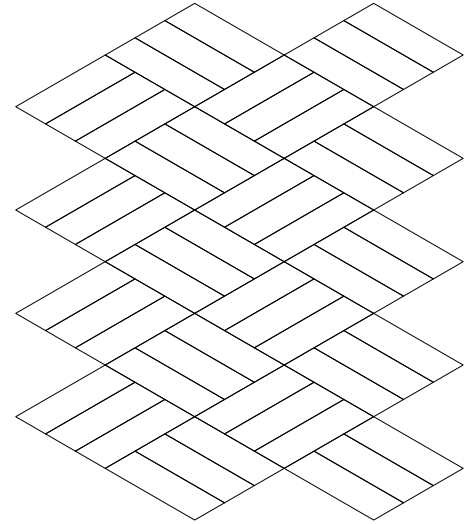
Wall / Set Dress Pearl Chevron, Set Dress White Chevron



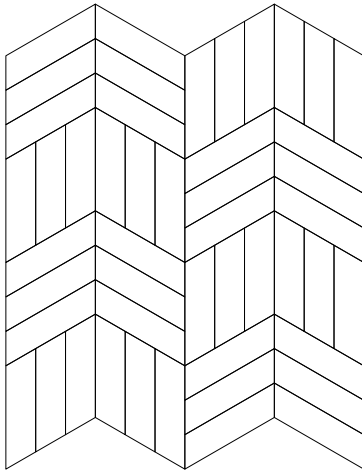
01



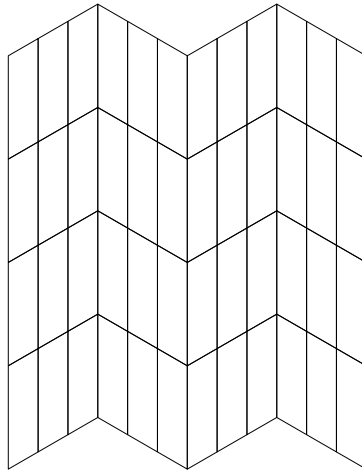
02



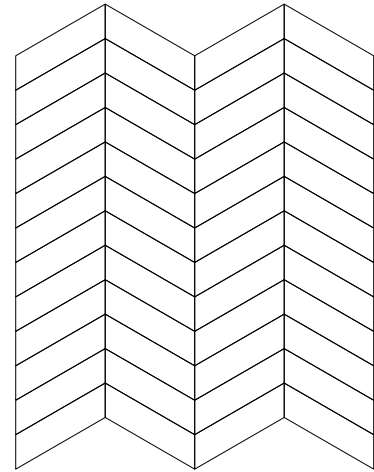
03



04



05



Lo spirito di prodotto ci guida ad esplorare le vie del design d'interni, incrociandole con la ricchezza di forma e sostanza dei volti sempre nuovi e diversi di una materia universale come la ceramica.

The product spirit takes us to explore the paths of interior design, crossing them with the richness in form and substance of the always new and different faces of a universal material like ceramics.

Durch unser Produktbewusstsein ergründen wir die Möglichkeiten des Innen-Designs denen wir mit stets neuartigem Formenreichtum und äußerlicher Substanz eines universellen Stoffes wie Keramik begegnen.

L'esprit du produit nous conduit à la recherche des chemins du design d'intérieur, en le mélangeant avec la richesse des formes et des éléments, toujours nouveaux et différents, d'une matière universelle comme la céramique.

Сама сущность изделия побуждает нас открывать всё новые пути интерьерного дизайна, скрещивая их с богатством форм и содержанием всегда новых и разных лицевых поверхностей такого универсального материала, как керамика.

PATCHWORK DI CEMENTINE CON 45 DISEGNI DIVERSI PER DECORARE A PAVIMENTO E PARETE OGNI TIPO DI AMBIENTE

34

Mix of cementine with 45 different patterns to decorate floor and wall in any kind of environment

Zement-Patchwork mit 45 verschiedenen Designs zur Dekoration von Boden und Wand jede Art von Umgebung

Combinaison de cementine avec 45 dessins pour décorer le sol et le mur de tout type de pièce

Лоскутная техника пэчворк в глазури с 45 разными рисунками для декорирования пола и стен в любой среде





Set Dress White 9090

> Set Dress White 9090

Wall / Set Dress White 9090, Metrosigns





Metrowood Natural 9090, Set Concrete White 3060

Floor / Metrosigns



Set Concrete Pearl 3060 , Set Wall White 1590

Floor / Metrowood Natural 9090

AS 2.0



40



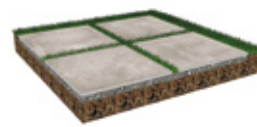
AS 2.0

Antiscivolo	Antislip	Trittsicher	Antidérapant	Противоскользящий
Spessore 20 mm	Thickness 20 mm	Stärke 20 mm.	Epaisseur 20 mm	Толщина 20 мм
Resistente agli sbalzi termici	Resistant to thermal shock	Unempfindlich gegen Temperaturschwankungen	Résistant aux chocs thermiques	Устойчивый к перепадам температур
Ingelivo - Ignifugo	Frost resistant - Fire resistant	Frostsicher - Feuerfest	Ingélif - Résistant au feu	Морозостойкий
Inalterabile nel tempo	Time resistant	Zeitbeständig (lange lebensdauer)	Inaltérable dans le temps	Огнеупорный
Facilissimo da posare	Easy to lay	Leichte Verlegung	Mise en oeuvre très simple	Долговечный
Nel caso di posa a secco è semplice da riposizionare o rimuovere, non servono lavori di muratura	In case of dry tiling it's easy to replace or remove, no walling	Bei der trockenen Verlegung einfach zu positionieren oder zu entfernen, es sind keine Maurerarbeiten erforderlich	Dans le cas de pose à sec est facile à replacer ou enlever, ils ne sont pas nécessaires des travaux de maçonnerie	Простой в укладке: при укладке сухим методом его легко установить и снять, без кладочного раствора.
Pavimentazioni sopraelevate *	Raised floors *	Doppelböden *	Pose sur plots *	Мощение на приподнятом основании *



Rettificata
Rectified
Kalibriert
Rectifié
Ректифицированная

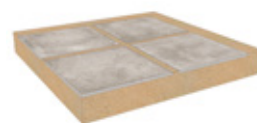
60x90 - 24"x36"



Posa a secco su erba
Dry laying on grass
Trockene Verlegung auf Grass
Pose sur pelouse
Сухая укладка на травяной газон



Posa a secco su ghiaia
Dry laying on gravel
Trockene Verlegung auf Kies
Pose sur gravillon
Сухая укладка на щебень



Posa a secco su sabbia
Dry laying on sand
Trockene Verlegung auf Sand
Pose sur sable
Сухая укладка на песок



Pavimentazioni sopraelevate
 Raised floors
 Doppelböden
 Pose sur plots
 Мощение на приподнятом основании



*** AVVERTENZE PER LA POSA SOPRAELEVATA**

Il formato 60x90 in 20 mm di spessore è ritenuto idoneo per la posa su massetto, su ghiaia, su sabbia, su erba, o su supporti ad una altezza massima di 2 cm utilizzando 6 supporti per lastra in modo da distribuire uniformemente i carichi. Per una sopraelevazione compresa tra i 2 ed i 10 cm è necessaria l'applicazione di una rete in fibra di vetro nella parte inferiore della lastra (foglio di acciaio zincato o rete plus per il formato 60x90). Una sopraelevazione superiore ai 10 cm è vincolata alla applicazione alla parte retrostante della lastra di un foglio di lamiera zincata.

*** WARNINGS FOR RAISED FLOOR LAYING**

Size 60x90 with 20 mm thickness is considered suitable for laying on screed, gravel, sand, grass or supports at a maximum height of 2 cm, using 6 supports per slab in order to distribute loads uniformly. For raised laying between 2 and 10 cm you must apply a fibre glass mesh to the rear of the slab (galvanised steel sheet or plus mesh for size 60x90). For raised floors of more than 10 cm, galvanised steel sheet must be applied to the rear of the slab.

*** HINWEISE FÜR DIE INSTALLATION ALS DOPPELBÖDEN**

Das Format 60x90 in 20 mm Stärke eist sich für die Verlegung auf Estrich, Kies, Sand, Gras oder Trägern mit einer maximalen Höhe von 2 cm, indem man 6 Stützen pro Platte verwendet, um die Lasten gleichmäßig zu verteilen. Für eine Verlegung in einer Höhe zwischen 2 und 10 cm muss ein Glasfasernetz auf der Unterseite der Platte angebracht werden (verzinkte Stahlfolie oder Plus-Netz beim Format 60x90). In einer Höhe über 10 cm darf nur verlegt werden, wenn man eine verzinkte Blechfolie auf der Rückseite der Platte anbringt.

*** MISES EN GARDE POUR LA POSE SURÉLEVÉE**

Le format 60x90 en 20 mm d'épaisseur est appropriés à la pose sur chape, gravier, sable, pelouse ou sur vérins à une hauteur maximum de 2 cm, en utilisant 6 vérins par plaque, de manière à répartir équitablement les charges. Pour une surélévation comprise entre 2 et 10 cm, il est nécessaire d'appliquer un filet en fibre de verre au dos de la plaque (feuille d'acier galvanisé ou filet « plus » pour le format de 60x90). Une surélévation de plus de 10 cm exige l'application d'une feuille de tôle galvanisée au dos de la plaque.

*** РЕКОМЕНДАЦИИ ПО УКЛАДКЕ ПЛИТ НА ФАЛЬШПОЛ**

Форматы плит 60x90 толщиной 20 мм считаются пригодными для укладки на стяжку, гравий, песок, траву или на основания высотой не более 2 см при использовании 6 стоек для каждой плиты для равномерного распределения нагрузок. Для поднятия уровня пола на высоту от 2 до 10 см необходимо приклеивать к нижней стороне плит сетку из стекловолокна (лист оцинкованной стали или сетку plus для формата 60x90). При поднятии уровня пола на высоту более 10 см обязательно следует крепить к нижней стороне плит лист из оцинкованной стали.

TECHNICAL INFORMATION

Gres porcellanato

Rettificato

Porcelain

Rectified

Feinsteinzeug

Kalibriert

Grès cérame

Rectifié

Керамогранит

Ректифицированная



Colori - Colours - Farben - Couleurs - Цвета

Set Concrete White



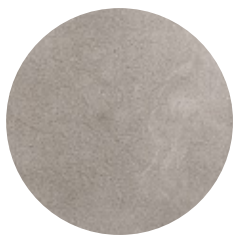
Set Concrete White 120120
Set Concrete White 9090
Set Concrete White 6060
Set Concrete White 3060
Set Concrete White 6090 As 2.0
Mosaico Set Concrete White

Set Concrete Pearl



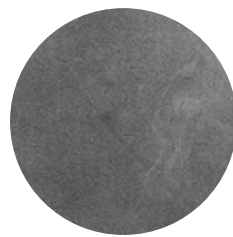
Set Concrete Pearl 120120
Set Concrete Pearl 9090
Set Concrete Pearl 6060
Set Concrete Pearl 3060
Set Concrete Pearl 6090 As 2.0
Mosaico Set Concrete Pearl

Set Concrete Grey



Set Concrete Grey 120120
Set Concrete Grey 9090
Set Concrete Grey 6060
Set Concrete Grey 3060
Set Concrete Grey 6090 As 2.0
Mosaico Set Concrete Grey

Set Concrete Dark



Set Concrete Dark 120120
Set Concrete Dark 9090
Set Concrete Dark 6060
Set Concrete Dark 3060
Set Concrete Dark 6090 As 2.0
Mosaico Set Concrete Dark

Formato

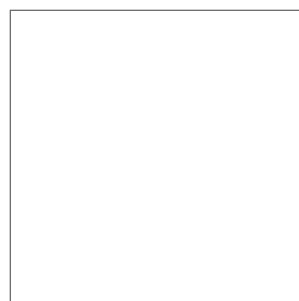
Size
Formate
Format
Форматы

Numero grafiche

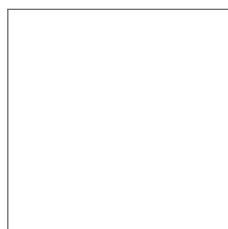
Number of patterns
Grafische Nummer
Nombre d'images
Количество графических оформлений

120x120 - 48"x48"	30
90x90 - 36"x36"	40
60x60 - 24"x24"	55
30x60 - 12"x24"	110
60x90 - 24"x36" As 2.0	45

Formati - Sizes - Formate - Formats - Форматы



120x120 - 48"x48"



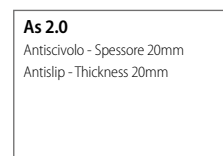
90x90 - 36"x36"



60x60 - 24"x24"



30x60 - 12"x24"



60x90 - 24"x36" As 2.0

As 2.0

Antiscivolo - Spessore 20mm
Antislip - Thickness 20mm

Su rete

On net
Auf Netz
Sur trame
Ha сетке

30x30 - 12"x12"



Mosaico
Set Concrete

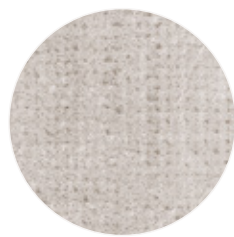
Colori - Colours - Farben - Couleurs - Цвета

Set Dress White



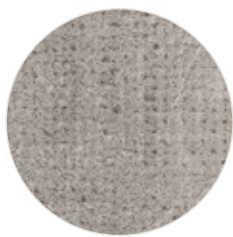
Set Dress White 120120
Set Dress White 9090
Set Dress White 6060
Set Dress White 3060
Set Dress White Chevron
Mosaico Set Dress White

Set Dress Pearl



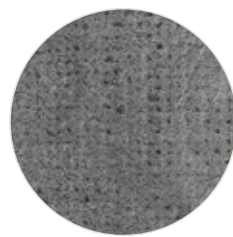
Set Dress Pearl 120120
Set Dress Pearl 9090
Set Dress Pearl 6060
Set Dress Pearl 3060
Set Dress Pearl Chevron
Mosaico Set Dress Pearl

Set Dress Grey



Set Dress Grey 120120
Set Dress Grey 9090
Set Dress Grey 6060
Set Dress Grey 3060
Set Dress Grey Chevron
Mosaico Set Dress Grey

Set Dress Dark



Set Dress Dark 120120
Set Dress Dark 9090
Set Dress Dark 6060
Set Dress Dark 3060
Set Dress Dark Chevron
Mosaico Set Dress Dark

Formato

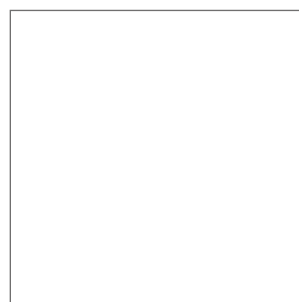
Size
Formate
Format
Форматы

Numero grafiche

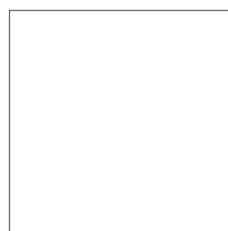
Number of patterns
Grafische Nummer
Nombre d'images
Количество графических оформлений

120x120 - 48"x48"	30
90x90 - 36"x36"	40
60x60 - 24"x24"	55
30x60 - 12"x24"	110

Formati - Sizes - Formate - Formats - Форматы



120x120 - 48"x48"



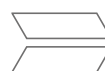
90x90 - 36"x36"



60x60 - 24"x24"



30x60 - 12"x24"



6,8x23,8 - 2^{1/2}"x9^{1/3}"
Set Dress Chevron

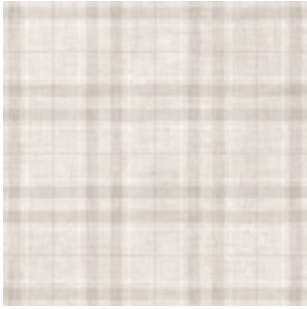
Su rete

On net
Auf Netz
Sur trame
Ha сетке

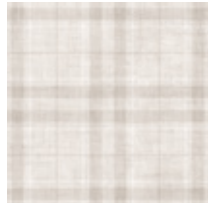
30x30 - 12"x12"



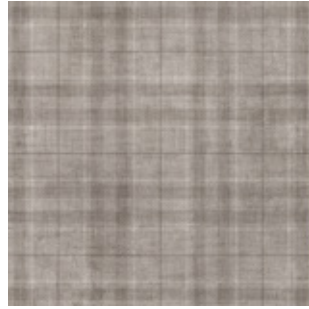
Mosaico
Set Dress



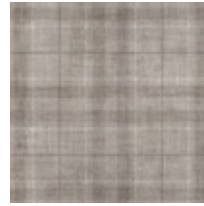
Set Tartan White 9090
90x90 - 36"x36"



Set Tartan White 6060
60x60 - 24"x24"



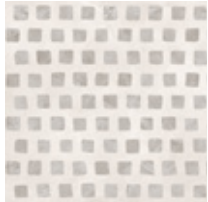
Set Tartan Grey 9090
90x90 - 36"x36"



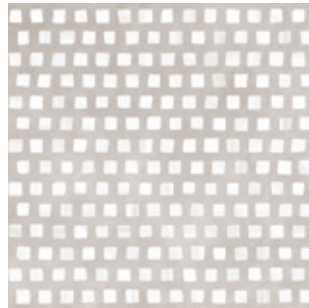
Set Tartan Grey 6060
60x60 - 24"x24"



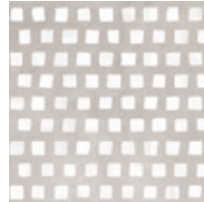
Set Gem White 9090
90x90 - 36"x36"



Set Gem White 6060
60x60 - 24"x24"



Set Gem Pearl 9090
90x90 - 36"x36"



Set Gem Pearl 6060
60x60 - 24"x24"



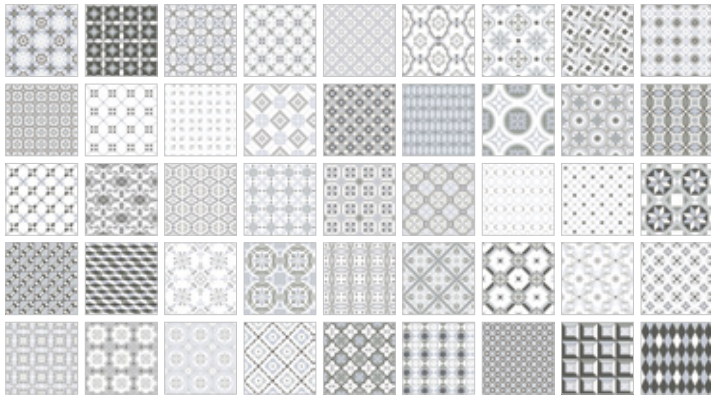
Metrowood Natural 9090
90x90 - 36"x36"



Set Wall White 1590
15x90 - 6"x36"



Ang. Set Wall White 1590
15x74 - 6"x30"



Metrosigns RET V4  4 R9 B.C.R. DCOF  10mm EN 14411 APPENDICE G Bla GL

La decorazione **Metrosigns** si compone di **45 varianti grafiche**.

The décor **Metrosigns** consists of **45 graphic variations**.

Die Dekoration **Metrosigns** umfasst **45 grafische Varianten**.



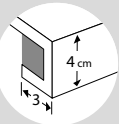

Metrosigns est composé par **45 décors différents**.

Декор **Metrosigns** включает в себя **45 графических вариантов**.

Metrosigns
 20x20 - 8"x8"



Pezzi speciali - Special pieces - Spezial-Stücke - Pièces spéciales - Специальных элементов

					
33x120 - 13"x48" Gradone 120 Set Concrete White Concrete Pearl Concrete Grey Concrete Dark	33x120 - 13"x48" Ang. Gradone 120 Sx Set Concrete White Concrete Pearl Concrete Grey Concrete Dark	33x120 - 13"x48" Ang. Gradone 120 Dx Set Concrete White Concrete Pearl Concrete Grey Concrete Dark	7,3x90 - 3 ⁷ / ₈ "x36" Battiscopa Set/90 Concrete White Concrete Pearl Concrete Grey Concrete Dark	7,3x60 - 3 ⁷ / ₈ "x24" Battiscopa Set/60 Concrete White Concrete Pearl Concrete Grey Concrete Dark	1,5x30 - 3 ⁹ / ₁₆ "x12" Quarter Round Set Concrete White Concrete Pearl Concrete Grey Concrete Dark
33x90 - 13"x36" Gradone 90 Set Concrete White Concrete Pearl Concrete Grey Concrete Dark	33x90 - 13"x36" Ang. Gradone 90 Sx Set Concrete White Concrete Pearl Concrete Grey Concrete Dark	33x90 - 13"x36" Ang. Gradone 90 Dx Set Concrete White Concrete Pearl Concrete Grey Concrete Dark	Dress White Dress Pearl Dress Grey Dress Dark	Dress White Dress Pearl Dress Grey Dress Dark	Dress White Dress Pearl Dress Grey Dress Dark

Imballi e pesi - Packing and weights - Verpackungen und Gewichte - Emballage et poids - Вес и упаковка



Formato Size Format Форматы (cm)	Scatola/Box				Pallet			Montato su rete On net Auf Netz Sur trame Собрана на сетке	Nome Name Nom Название	Formato Size Format Форматы (cm)	Pzz./Scat. Pcs/Box Stck/Kart. Pcs/Boite Шт/Кор.	Pzz./Comp. Pcs/Set Stck/Set Pcs/Set Штук в композиции	Comp./Scat. Set/Box Set/Kart. Set/Boite Композиций в коробке	Pannelli/Scat. Panels/Box Pannele/Kart. Panneaux/Boite Панелей в коробке
	Pzz./Scat. Pcs/Box Stck/Kart. Pcs/Boite Шт/Кор.	Mq/Scat. Sqm/Box Qm/Kart. Mc/Boite Кв.м/кор.	Kg/Scat. Kg/Box Kg/Kart. Kg/Boite Кг в/кор.	Kg/Mq Kg/Sqm Kg/Qm Kg/Mc Кг в/Кв.м	Scatole Boxes Kart. Boites Коробок в палете	Mq Sqm Qm Mc Кв.м	Kg кг в палете							
120x120	2	2,88	63,4	22	20	57,6	1.268	Battiscopa Set/90	7,3x90	8				
90x90	1	0,81	17,8	22	36	29,16	641	Battiscopa Set/60	7,3x60	14				
60x90 As 2.0	1	0,54	23,8	44,1	48	25,92	1.142	Gradone 120	33x120	2				
60x60	4	1,44	31,7	22	30	43,2	951	Ang. Grad. 120 Sx	33x120	1				
30x60	7	1,26	27,7	22	32	40,32	886	Ang. Grad. 120 Dx	33x120	1				
15x90 Set Wall	9	1,22	26,8	22	32	39,04	858	Gradone 90	33x90	2				
6,8x23,9 Chevron	24	0,39	8,6	22	54	21,06	465	Ang. Grad. 90 Sx	33x90	1				
30x30 Mosaico	6	0,54	11,3	20,9	60	32,4	678	Ang. Grad. 90 Dx	33x90	1				
20x20 Metrosigns	27	1,08	23,8	22	39	42,12	928	Ang. Set Wall	1,5x74	2				
								Quarter Round	1,5x30	42				

Consigli per la posa - Suggestion for laying - Ratschläge für die Verlegung - Conseil pour la pose - Советы по укладке

Viste le caratteristiche della serie si consiglia: • Fuga 2 mm • Per i formati 30x60 si consigliano pose affiancate o a correre sfalsate di 3/4 • Colore fuga White Mapei 103 Kerakoll 51 Pearl Mapei 110 Kerakoll 03 Grey Mapei 112 Kerakoll 04 Dark Mapei 113 Kerakoll 04 Metrowood Mapei 112 Kerakoll 04	Considering the characteristics of this series we suggest: • 2 mm joint • For the sizes 30x60 lined up laying or 3/4 staggered laying is suggested • Grouting colour White Mapei 103 Kerakoll 51 Pearl Mapei 110 Kerakoll 03 Grey Mapei 112 Kerakoll 04 Dark Mapei 113 Kerakoll 04 Metrowood Mapei 112 Kerakoll 04	Im Hinblick auf die Eigenschaften der Serie es empfiehlt sich: • 2 mm. Fuge • Für Formate 30x60 neben verlegt oder 3/4 versetzt • Farbe der Fuge White Mapei 103 Kerakoll 51 Pearl Mapei 110 Kerakoll 03 Grey Mapei 112 Kerakoll 04 Dark Mapei 113 Kerakoll 04 Metrowood Mapei 112 Kerakoll 04	Vu les caractéristiques de la série, nous conseillons: • Joint 2 mm • Pour les formats 30x60, il est conseillé une pose alignée ou une pose décalée au 3/4 • Couleur de joint White Mapei 103 Kerakoll 51 Pearl Mapei 110 Kerakoll 03 Grey Mapei 112 Kerakoll 04 Dark Mapei 113 Kerakoll 04 Metrowood Mapei 112 Kerakoll 04	В силу характеристик данной серии рекомендуется: • Шов 2 мм • Для форматов 30x60 рекомендуется укладка рядами или со смещением на 3/4 • Цвет шов White Mapei 103 Kerakoll 51 Pearl Mapei 110 Kerakoll 03 Grey Mapei 112 Kerakoll 04 Dark Mapei 113 Kerakoll 04 Metrowood Mapei 112 Kerakoll 04
---	--	--	---	--

Certificazioni - Certifications - Zertifizierungen - Certifications - Сертификаты

Static coefficient of friction ASTM test ASTM C1028 - 06 Dry $\mu > 0,6$ Wet $\mu > 0,6$ Natural surface - Antislip	Dynamic coefficient of friction B.C.R. method D.M. 14 giugno 1989, n. 236 $\mu > 0,40$ Metrosigns	Dynamic coefficient of friction DCOF AcuTest® ANSI A137.1 - 2012 Wet $\geq 0,42$ Natural surface - Antislip	 
--	--	---	--

<p>RET</p> <p>Rettificata Rectified Kalibriert Rectifié Ректифицированная</p>	<p>V2</p> <p>Piastrelle con lieve variazione di tono e disegno Tiles with slight shade and aspect variation Fliesen mit leicht unterschiedlichen Tonalitäten und Muster Carreaux avec faible différence de nuance et structure Плитка с легким изменением тона и рисунка</p>	<p></p> <p>Ingelivo Frost-resistant Frostsicher Résistance au gel Морозостойкая</p>	<p>5</p> <p>Gruppo di usura superficiale Surface abrasion group Abrieb Degré de usure superficielle Группа истираемости поверхности</p>	<p>R10 R11</p> <p>DIN 51130 Classificazione antiscivolosità Antislip Rutschhemmungsklassifizierung Classification glissement Классификация устойчивости к скольжению</p>	<p>A+B</p> <p>DIN 51097 Classificazione antiscivolosità Anti-slip Rutschhemmungsklassifizierung Classification glissement Классификация устойчивости к скольжению</p>	<p></p> <p>Spessore mm Thickness mm Dike mm. Épaisseur mm Толщина MM</p>
	<p>V4</p> <p>Piastrelle con variazione random di tono e disegno Tiles with random shade and aspect variation Fliesen mit zufällig unterschiedlichen Tonalitäten und Muster Carreaux avec différence aléatoire de nuance et structure Плитка со случайным изменением тона и рисунка</p>					

THANKS TO:
Zucchetti. Kos



Imballi, colori e misure sono soggetti a inevitabili variazioni.
Le informazioni contenute nel presente catalogo sono il più possibile esatte, ma non sono da ritenersi legalmente vincolanti.

Packings, colours and sizes are subject to inevitable variations.
The information contained in this catalogue is correct to the best of our knowledge, but it is not construed as legally binding.

Verpackungen, Farbe und Masse der Fliesen unterliegen unvermeidlichen Veränderungen.
Die im vorliegenden Katalog enthaltenen Angaben sind so genau wie möglich gehalten, sind aber auch rechtlich nicht verbindlich.

Changements de poids, nuances et dimensions sont typiques et inevitable.
Les renseignements donnés dans ce catalogue sont le plus possible exacts, sans avoir effet obligatoire.

Упаковка, цвет и размеры могут претерпеть неизбежные изменения.
Вся содержащаяся в настоящем каталоге информация максимально точная, но она не является юридически обязывающей.

ceramica
SANT'AGOSTINO

Via Statale, 247 - 44047 S. Agostino (FE) ITALY

T. +39 0532 844111

F. Italia + 39 0532 846113

F. Export + 39 0532 844209

info@ceramicasantagostino.it

www.ceramicasantagostino.it



#AgostinoLover